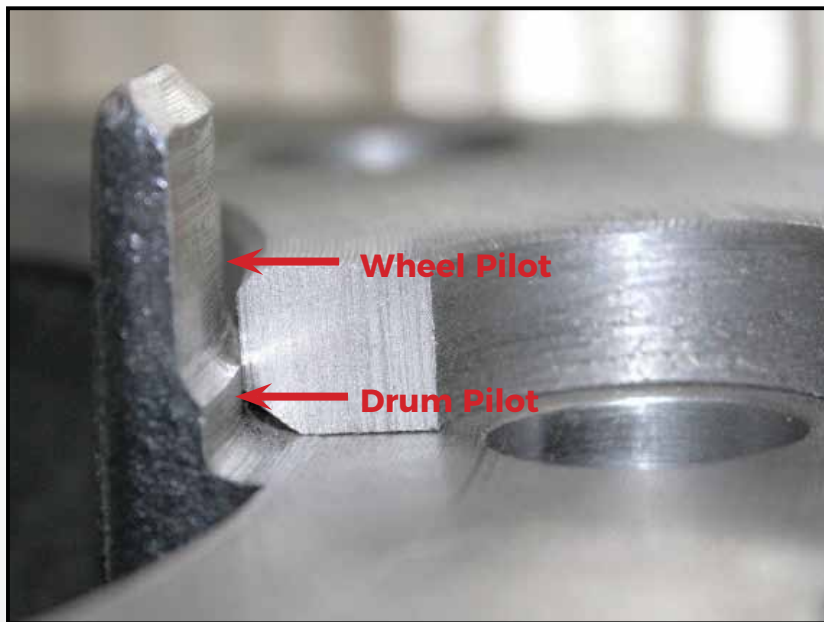


OUT OF ROUND/ OUT OF BALANCE

In the field “Out of Round” is in general a result of:

- Drum is not balanced or is not balanced within accepted North American standards.
- Incorrect machining of pilot mounting.
- Improper mounting during assembly: The drum will slip off the pilot during the tightening of wheel nuts. This may cause the vehicle to have a vibration, shake or an “Out of Balance” feel. (See illustration for hub pilot information)



A mis-piloted drum will be mounted on the wheel pilot instead of the drum pilot.

Approximate difference in size between the wheel pilot and the drum pilot is 0.078.

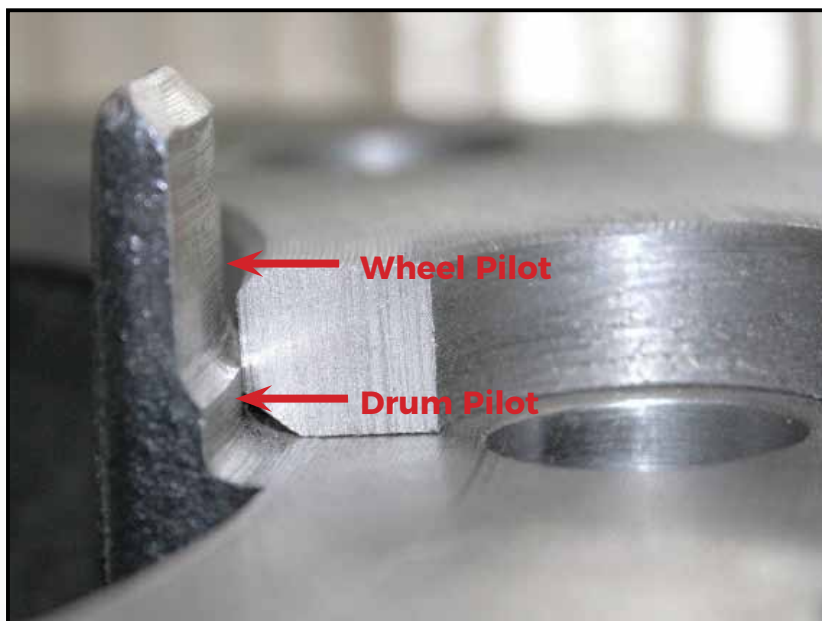
SilverbackHD recommends when installing a drum:

- Inspect hub for damage or foreign material build up.
- Inspect for corrosion in the mounting areas.
- Remove any corrosion or build up, and replace hub if damaged.
- When drum is mounted on the drum pilot check if it is flush to the flange face of the hub.

OUT OF ROUND/ OUT OF BALANCE

In the field “Out of Round” is in general a result of:

- Drum is not balanced or is not balanced within accepted North American standards.
- Incorrect machining of pilot mounting.
- Improper mounting during assembly: The drum will slip off the pilot during the tightening of wheel nuts. This may cause the vehicle to have a vibration, shake or an “Out of Balance” feel. (See illustration for hub pilot information)



A mis-piloted drum will be mounted on the wheel pilot instead of the drum pilot.

Approximate difference in size between the wheel pilot and the drum pilot is 0.078.

SilverbackHD recommends when installing a drum:

- Inspect hub for damage or foreign material build up.
- Inspect for corrosion in the mounting areas.
- Remove any corrosion or build up, and replace hub if damaged.
- When drum is mounted on the drum pilot check if it is flush to the flange face of the hub.